



Global Finishing Solutions



EXPERT Spray Booths

- > **Downdraft Airflow**
- > **Dual-Skin Insulated Panels**
- > **High-Efficiency Heat System**
- > **Controlled Air Flow Ceiling**

Expert

Expert Spray Booths

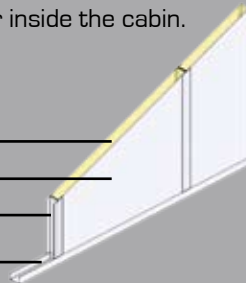
Designed for shops demanding affordability, but refusing to compromise on performance, the Expert is the perfect solution. Dual-skin insulated construction, CureTronic control panel, controlled air-flow ceiling (CAF), angled ceiling lights, and energy efficient heat system make the Expert a solid choice for shops seeking a full featured booth.

Rock-Solid Construction

Pre-coated dual-skin insulated panels provide a smooth fit and finish with no exposed wires or cables. They also cut down on noise outside the booth, reduce ambient heat outside the booth, and keep the heated air inside the cabin.

Cut-Away Wall Panel >>

- Fiberglass insulation
- White-pre-coated steel
- H-Channel Construction
- Floor Levelling Profile



Quality down to the nuts and bolts



GFS uses only top-quality hardware. Weld-free designs mean no weak points, and no corrosion. GFS hinges, latches, and hardware are all fully adjustable so you get a perfect fit, every time.



Energy-Efficient Lighting - ETL Listed

Inside-accessible, Electronic ballasts, T-8 color-corrected tubes

Each light fixture includes color corrected T-8 tubes for excellent color-matching and illumination while being cost effective.



12 6-tube Light Fixtures



6-tube Corner light optional

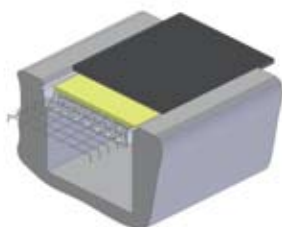
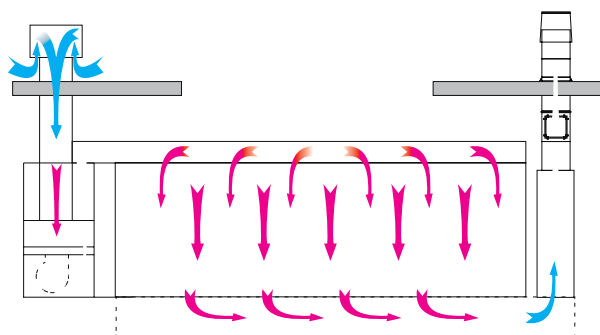
Controlled Airflow Ceiling



* Shown with AdvanceCure

The Controlled Airflow Ceiling maximizes the effectiveness of the downdraft model. The main flow zone concentrates airflow around the vehicle to remove overspray. The secondary flow zones located on each side of the booth circulate overspray away from the walls and light fixtures.

Downdraft Airflow



Engineered pit design for optimum balance of airflow. Raised basement available for no-pit installs.

Dimensions:

Internal - 14'w x 9'h x 24'l

External - 14'5"w x 11'h x 24'5"l

4-wing Entry Door - 10'8"w x 8' 10"h

Optional Low Profile- Internal- 14'w x 8'h x 24'l

External- 14'5"w x 10'h x 24'5"l

- Full Downdraft airflow for spray and cure
- White pre-coated galvanized steel
- Dual-skin insulated panel construction
- Controlled air flow ceiling
- Eight 6-tube CAF Angled light fixtures, 120/277V
- Four 6-tube sidewall light fixtures, 120/277V
- Light wiring harness
- One personnel access door 32"w x 7'8"h
- Single row exhaust pit
- Cabin designed to accept fire suppression system

Available Cabin Options

- 6-Tube corner light fixtures
- Drive-Thru configuration
- Working length extensions
- Indirect fired generating group with heat exchanger
- Raised platform
- Internal pneumatic ramp
- Two or Three-row pit
- AdvanceCure accelerated curing system



Three Row Pit

Optional Paint Mix Rooms

Contamination control is vital to producing high quality finishes. Paint Mix Rooms are engineered to provide contamination control during the paint mix process. Paint Mix Rooms are available in multiple configurations and designed to stand alone or connect to paint booths for direct entry.



Ultra Mix Room dual-skin

BT1200 High-Efficiency Recirculating Heat Group



Shown with optional rectangular ductwork

- Designed for indoor use
- 10 hp intake motor
 - 7.5 hp exhaust motor
 - 34" Tube-axial exhaust fan
 - 12,000 CFM
 - 1.2 Million BTU direct-fire burner
 - Auto pressure control
 - Straight intake and exhaust duct for 15' ceiling

BT1200 Options:

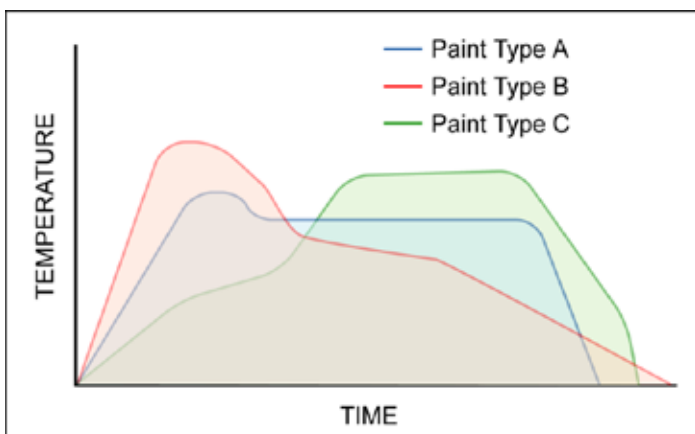
- Non-heated units available
- 1.5 million BTU upgrade
- 15 hp intake motor upgrade
- Twin Variable Frequency Drive (VFD) packages
- Natural gas or propane fuel
- Rectangular ductwork



<< CureTronic Control Panel

Easy-to-Use, fully-programmable PLC control panel with SmartCure allows custom 'Heat vs. Time' cure cycles and booth pressure balancing gauge Standard equipment with BT1200 Heat Group.

SmartCure™ technology



SmartCure™ profiles are based on the unique curing properties of each specific coating.

What is SmartCure™?

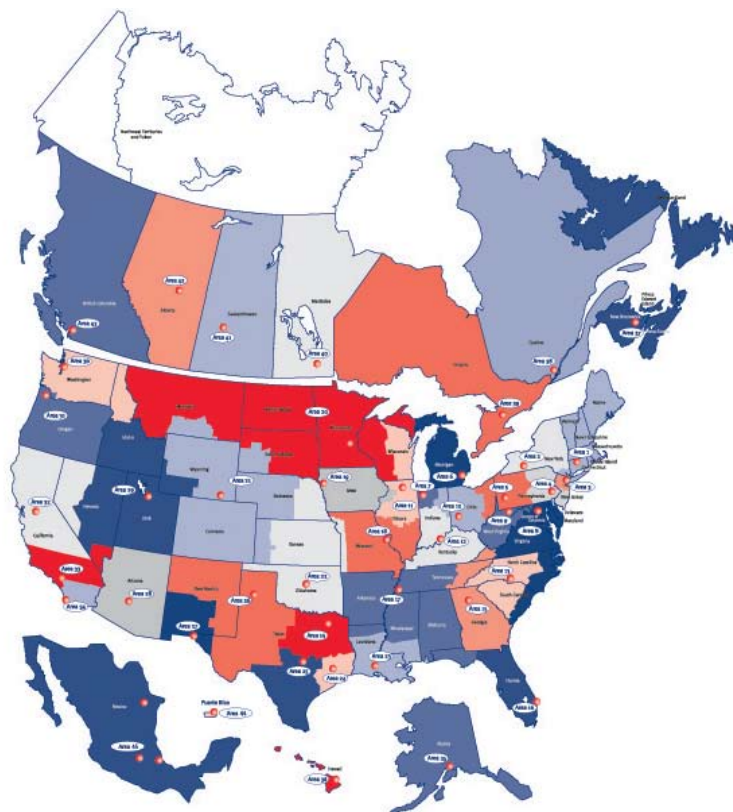
Integrated into CureTronic control panel, SmartCure™ technology optimizes the control of heat-and-time to produce the most effective cure/bake cycles for your specific coatings.

Each coating has a unique 'cure profile' that can be programmed into the CureTronic control panels. SmartCure™ enabled control panels know what temperature the coating needs, at what time during the cure cycle, and for exactly how long. By reducing total curing time, SmartCure™ saves you time, energy and money.

AdvanceCure™ Accelerated Airflow System - Optional in EXPERT

The original productivity booster, only available from GFS. AdvanceCure is the solution for faster curing of waterborne and solvent-based coatings. The new GFS AdvanceCure system with improved airflow velocity and more powerful motors accelerates the airflow in the paint booth, bringing the painted panels up to optimum curing temperature. This fast moving airflow also draws vapors out of the coating much faster, curing all types of coatings in less time.

- 4-tower or 6-tower configurations
- Sidewall towers or corner towers available
- Sidewall towers include 1/2 hp motor
- Corner towers include 1 hp motor and integrated 3-tube light fixture
- Mix-and-match corner and sidewall towers. It's up to you!



**Your source for Sales-Installation-Service
of all GFS products!**

**Find your local distributor online at
www.globalfinishing.com**

Your local GFS distributor is your official source for
technical support, product info, sales and
installation for all GFS products.

Code Compliance

• NFPA-33 Standard for spray application using flammable and combustible materials • NFPA-86 Standard for ovens and furnaces • NFPA-91 Standard for exhaust systems for a conveying of materials • NFPA-101 Life Safety Code • NFPA-70 National Electric Code • OSHA Safety and Health Standards (29CFR 1910, 1910.107) • BOCA National fire prevention code • ICBO Uniform Fire Code Article 45 • SBCCI Standard Fire Prevention Code • ICC International Building Code • ICC International Fire Code Chapter 15. This booth has been reviewed and approved by: • ETL Equipment Testing Laboratory report # 276-2399-99-04 Cabin • All light fixtures are ETL approved for hazardous locations. All light fixtures are accessible from the interior of the spray booth and conform to the provisions of N.F.P.A. 33. Electrical components, such as motors, motor starters, disconnect switches and push buttons, are listed or approved for the Class and Division in which they are located. Motors UL recognized PRGYZ, Marathon Electric file E49747 (or equal), Glass used in the spray booth is tempered and meets and exceeds ANSI Z-97.1 standard. Conformance to all these requirements is dependent upon the manner in which the equipment is installed. The contractor will make certain that all of the electrical wiring and conduit, piping, gas supply, roof penetrations, automatic fire protection systems, and the location of the equipment within the building also conforms to the cited codes and other references. Fire suppression system is NOT included with the standard booth but is required by NFPA-33.

Consult your Global Finishing Solutions sales representative for details of required installation, concrete pit, electrical wiring, conduit, air piping, roof penetrations and automatic fire suppression. The equipment installation location should be reviewed and approved by the local authorities having jurisdiction. All designs, specifications and components are subject to change at the manufacturer's sole discretion at any time without notice. Data published herein is informational in nature and shall not be construed to warrant suitability of the unit for any particular purpose as performance may vary with the conditions encountered.



Global Finishing Solutions • 800-468-5872 • auto@globalfinishing.com

Dallas, TX • Osseo, WI • Monterrey, MX • Barrie, ON

www.globalfinishing.com